

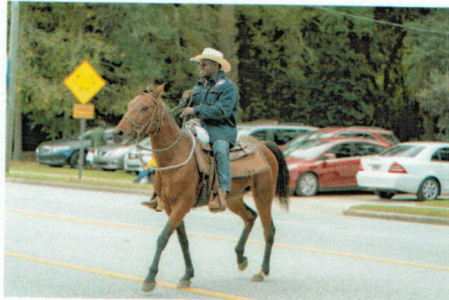


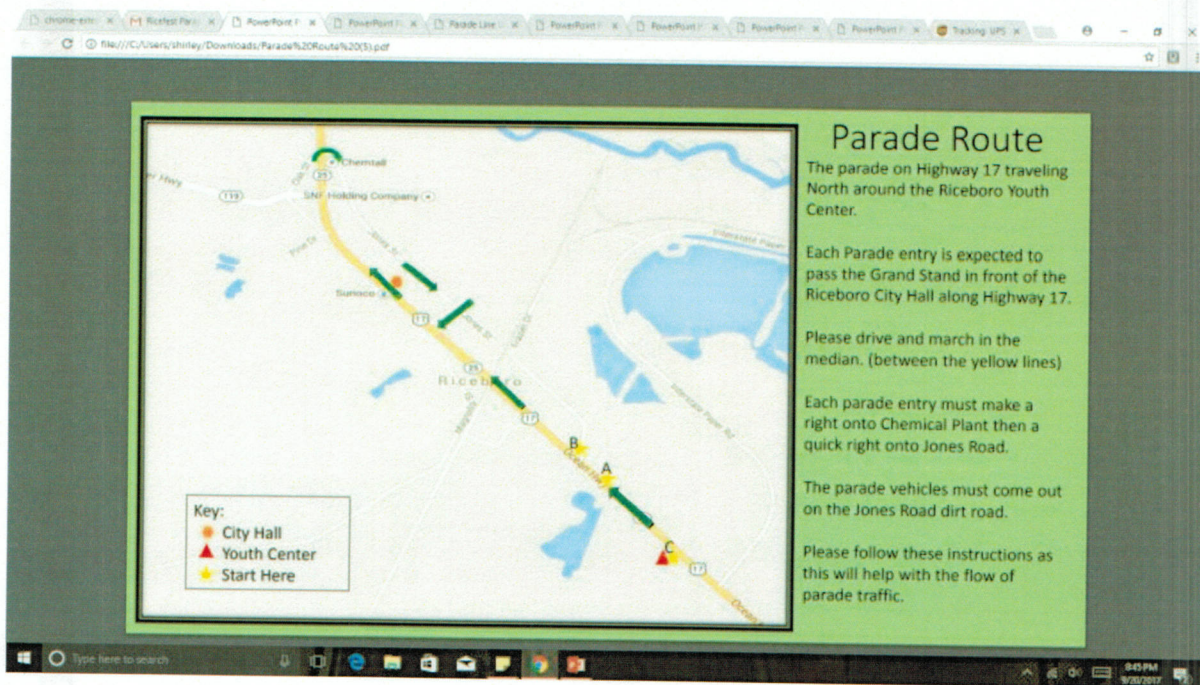
Riceboro Annual



Ricefest Parade

2022 Theme: "Still in Full Bloom"





Riceboro Ricefest Parade Line Up 2022

Parade Line Up entries will have signs for each designated area labeled:

- A-Block
- B-Block
- C-Block
- Exit/End of Parade Route

A-Block

Starts along Hwy 17 at Triple J's Auto Repair

B Block

Starts at beginning of Frasier Road

C-Block

Starts at Riceboro Youth Center
Exit/End of Parade Route



RiceFest Parade Entry Form 2022

Parade Line up starts at 8:00 a.m. and begins at 9:00 a.m.

Entry Title: _____

Contact Name: _____ Email: _____

Mailing Address: _____

PHONE NUMBER: _____ Number of people participating _____

DESCRIPTION OF ENTRY (BE SPECIFIC)

Entry has sound: (circle) YES NO Approximate Length of Float: _____

CATEGORY (Circle one that best describe your entry):

Marching Group Animals Autos Tractor Float Band Church Business

ENTRY DESCRIPTION (Example: One truck pulling a 12' trailer or 3 motorcycles and a golf cart): This will provide us information for the parade announcer. We reserve the right to shorten your description as needed.

How Many vehicles/Descriptions of Vehicles? _____

(This is very important so we can provide the proper amount of space for lining up the parade entries.)

Will there be music on your entry? YES NO

I, the undersigned, agree that I have read and understand the guidelines included with the entry form and hereby agree to abide by them. I agree that neither the City of Riceboro nor any agent, employee, or volunteer assumes any responsibility for any personal injury or property damage suffered in connection with the Ricefest parade. I agree to release and hold harmless such parties from any claims for injury or damage.

Signature: _____ Date: _____

Please return this form to:

City of Riceboro

Attention: Ricefest Parade Committee

4614 S. Coastal Hwy, Riceboro, GA 31323

(912) 463-2020 or (912) 884-2986

Email: cityhall@cityofriceboro.org Website: www.cityofriceboro.org



RiceFest Festival Parade Rules 2022

Entrants must observe all applicable rules and regulations and follow instructions from police and parade officials or be barred from the parade. The RiceFest Parade Committee reserves the right to remove any entrant from the parade either prior to assembly, while assembling, or any time during the parade for failure to follow rules.

NO MATERIALS MAY BE THROWN ALONG THE PARADE ROUTE. WALKERS MAY HAND OUT CANDY & PROMOTIONAL MATERIALS TO SPECTATORS.

No marching unit may stop forward motion for performances except in the areas designated by the Rotary Parade Committee. This stop may not exceed 90 seconds.

A space of 40 feet between each unit will be enforced. All units are required to close gap between units when instructed by parade officials.

Alcoholic beverages are forbidden on any float, in any vehicle, or on the person of any participant. Participants consuming alcohol prior to or during the parade will be removed from the lineup. All city, county, and Georgia state statutes concerning the consumption of alcoholic beverages will be strictly enforced by the police before, during, and after the parade.

Drivers of all vehicles in the parade areas must possess a valid driver's license, be at least 18 years old and possess all liability vehicle insurance.

Livestock, reptiles, wild and domestic animals shall not be in the parade unless special written approval by the RiceFest Parade Committee is obtained. If approval is granted, all animals must have someone to clean up manure, if necessary, along the parade route.

Use of high intensity sound making devices is strongly discouraged. Only music with no profanity or vulgar content will be allowed. Parade officials have the complete authority in this matter and reserve the right to withdraw any unit that does not comply with their instructions to turn down or turn off sound when instructed to do so. Failure to comply with the officials' instructions will result in immediate removal from the parade and jeopardize future participation.

The RiceFest Parade Committee reserves the right to withdraw any unit of which wardrobe, costume, or performance does not conform to the standards of reasonable public taste and fit the RiceFest parade. This includes nudity, revealing attire, promotion of vulgar languages or obscenities, among other things. Political campaigning is not permitted. The RiceFest Parade Committee does not accept the responsibility for travel, food, or lodging expense of any unit.

FLOATS

Vehicles will not be allowed in the parade unless pulling a float or providing transportation for pageant entrants. Exceptions will be considered for antique vehicles and other organized specialty car groups with prior approval. Float platforms should be at least 7 feet wide and 15 feet long with a fixed axle at/near the rear and a steerable axle at the front.

Farm wagons make excellent platforms. No decorations and or float construction material may protrude from the side of the float. All electrical devices must be properly grounded.

No participants may jump on a float to ride and not interfere with any other unit in any way. No participants will dismount from a float during the parade route. Participants will not have body parts, particularly legs and feet, extending past the sides, front, or rear of the float. They are extreme safety hazards.

BANDS – MARCHING/WALKING UNITS

All marching units must maintain forward motion. Routines that cause excessive gaps are not permitted. No unit may stop forward motion to perform except in the 3 areas designated by the RiceFest Parade Committee.

Performance stops may not last more than 5 minutes. If for any reason a gap of greater than 40 feet is created, marching units must increase their pace to close the gap. All members of any marching unit under 10 years old should be supervised.

LINEUP:

All entries will be assigned a line-up number and receive further instructions about the parade upon receipt and approval of the application.

ROUTE:

The parade will start from the assembly area at the Riceboro Youth Center on U.S. Highway 17 (Coastal Highway). It will continue up South Coastal Highway past Riceboro City Hall and end at Jones Street across from Riceboro Church of God. All floats will exit on Jones Street.

For more information or clarification on parade rules, please contact Riceboro City Hall by email: cityhall@cityofriceboro.org or call (912) 884-2986 912-463-2020.

